

PROPOSED USE FOR 10,400 S.F. BUILDING
 3,014 S.F. RETAIL SPACE
 1,386 S.F. STORAGE
 6,000 S.F. MANUFACTURING/WAREHOUSE
 TOTAL BUILDING AREA = 10,400 S.F.
 EMPLOYEES PER SHIFT = 8

PARKING REQUIREMENTS :
 RETAIL SPACE = 1 SPACE PER 150 S.F. = 20.1 SPACES
 MANUFACTURING = 1 SPACE PER 500 S.F. = 14.8 SPACES

PARKING REQUIRED : (10,400 S.F. BUILDING)
 20 STANDARD SPACES (3,014 S.F. RETAIL)
 15 STANDARD SPACES (7,386 S.F. MANUFACTURING/STORAGE)
 2 HANDICAPPED SPACES PER CMR REGULATIONS

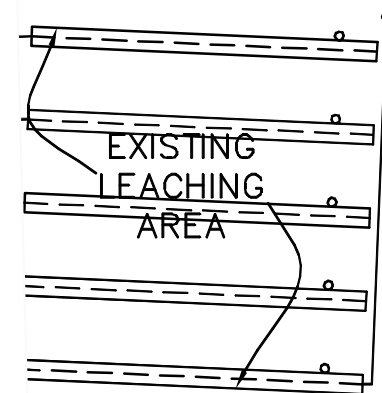
TOTAL PARKING REQUIRED = 37 SPACES

PARKING AVAILABLE (ADHERING TO NORFOLK ZONING BYLAWS)
 35 STANDARD SPACES
 2 HANDICAPPED SPACES
 TOTAL PARKING SPACES AVAILABLE = 37 SPACES

LOT AREA = 247,447 S.F.
 LOT COVERAGE = 61,293 S.F. (24.77%) (INCLUDES ALL OF FRONTAGE ROAD)
 LOT COVERAGE ALLOWED = 60%
 AQUIFER ZONE II COVERAGE GREATER THAN 15% REQUIRES SPECIAL PERMIT

MATERIALS QUANTITY TABLE		
MATERIAL	QUANTITY	
PROCESSED RECLAIMED PAVEMENT	1,300 CUBIC YARDS	
SCREENED LOAM	1,200 CUBIC YARDS	
HOT MIX ASPHALT	600 CUBIC YARDS	
¾" WASHED CRUSHED STONE	200 CUBIC YARDS	
TOTAL MATERIALS	3,300 CUBIC YARDS TOTAL	
TO BE BROUGHT ONTO THE SITE		

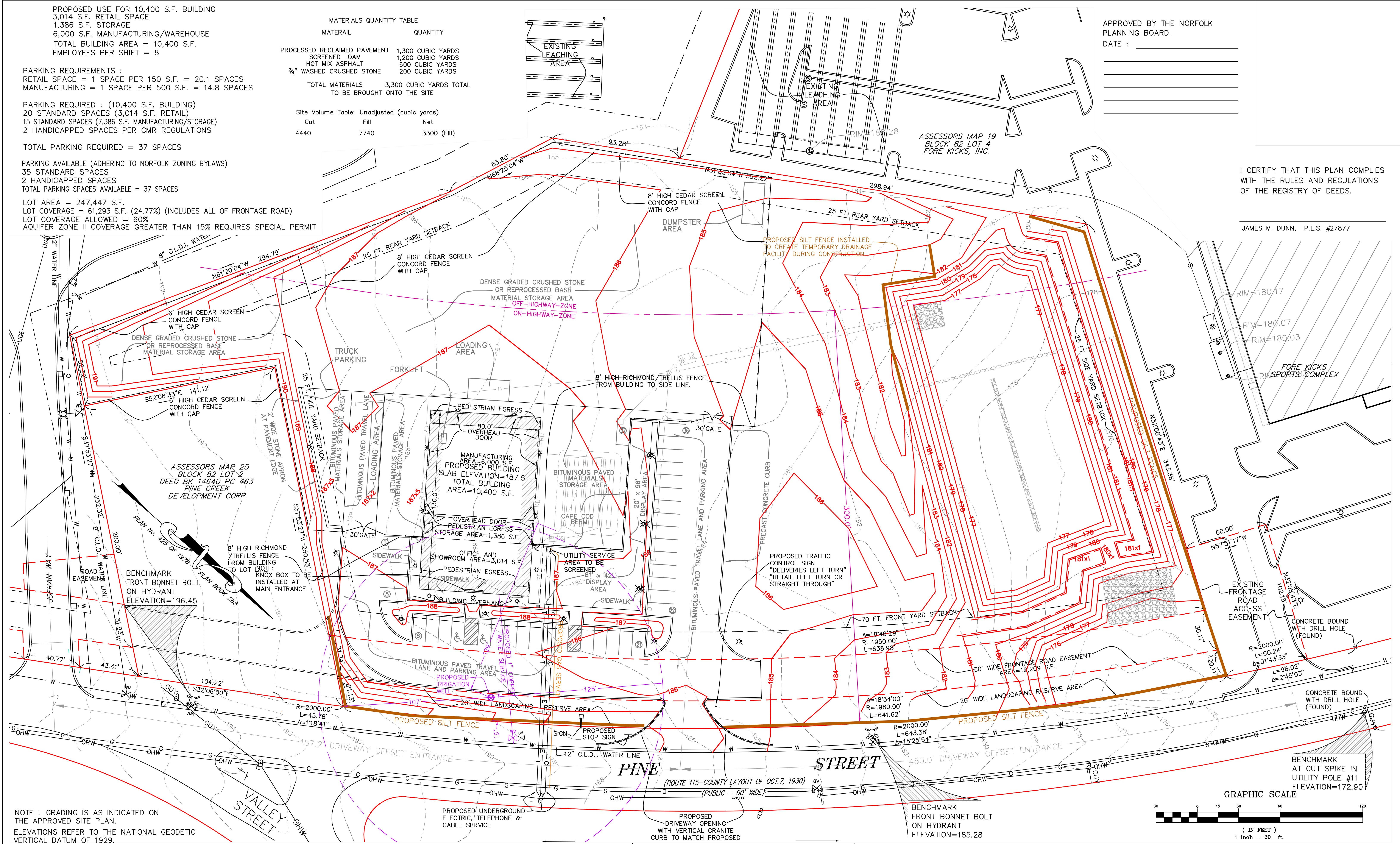
Site Volume Table: Unadjusted (cubic yards)		
Site	Cut	Fill
4440	7740	3300 (Fill)



APPROVED BY THE NORFOLK PLANNING BOARD.
 DATE : _____

I CERTIFY THAT THIS PLAN COMPLIES WITH THE RULES AND REGULATIONS OF THE REGISTRY OF DEEDS.

JAMES M. DUNN, P.L.S. #27877



NOTE : GRADING IS AS INDICATED ON THE APPROVED SITE PLAN.
 ELEVATIONS REFER TO THE NATIONAL GEODETIC VERTICAL DATUM OF 1929.

LEGEND	
OHW	OVERHEAD WIRES
W	WATER SERVICE
G	GAS SERVICE
D	STORM DRAIN
RD	ROOF DRAIN
123x4	PROPOSED FINISH GRADE
-316	EXISTING CONTOUR
-316	PROPOSED CONTOUR
—	PROPOSED GRANITE CURB
—	PROPOSED CONCRETE CURB

ASSESSORS REFERENCE
 MAP 25 BLOCK 82 LOT 5
 ZONING REFERENCE
 COMMERCIAL C-1

NO.	DATE	REVISIONS
5	5/30/03	DECISIONS/CONDITIONS OF APPROVAL
4	3/5/03	NORFOLK REVIEW COMMENTS
3	1/23/03	NORFOLK REVIEW COMMENTS
2	10/21/02	SITE GRADING AND DRAINAGE
1	9/16/02	SITE GRADING AND DRAINAGE

DATE : AUGUST 2, 2002

RESEARCH BY: JWN
 FIELD SURVEY: JWN/JEM
 COMPUTED BY: JEFF
 DRAFTED BY: JEFF
 DESIGNED BY: CAF
 CHECKED BY: JMD

Dunn · McKenzie, Inc.
 LAND SURVEYING AND CIVIL ENGINEERING
 206 DEHAM STREET, Rt. 1A at Rt. 115
 NORFOLK, MASSACHUSETTS 02056
 (508) 384-3990 - FAX (508) 384-3905

PREPARED FOR :
 KENNETH S. BROWN
 COLONIAL WOODWORKERS, INC.
 2 SOUTHWILLE ROAD
 SOUTHBOROUGH, MA 01772
 OWNED BY:
 COUNTDOWN ENTERPRISES, INC.
 215 EVERETT STREET
 WRENTHAM, MA 02093

SITE DEVELOPMENT		
Plan of land in		
NORFOLK, MASSACHUSETTS		
SHEET NO.	SCALE	PROJECT NO.
2	1"=30'	3675 .DWG

